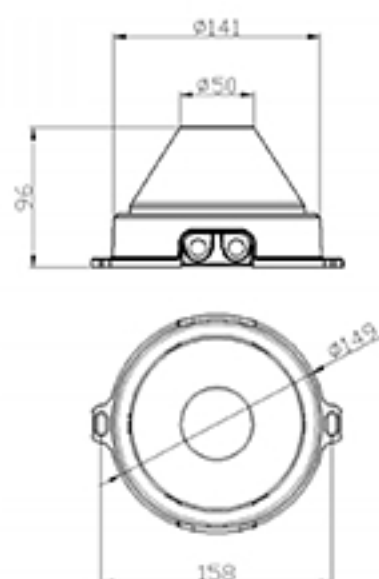
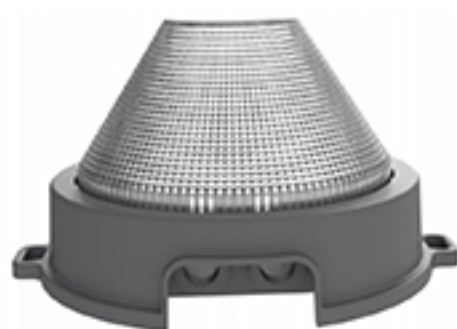
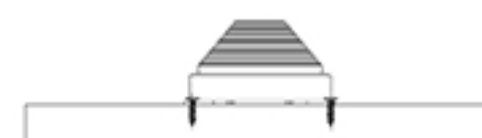


LED POINT LIGHT SOURCE SERIES



Lamp model:	FCS-FMD1-141
Input Wattage:	9W
Input voltage:	DC24V
Related CCT:	Single color/RGBW
Material:	Aluminum alloy+Fresnel Lens
Housing color:	Oxide/custom color
Beam angle:	120°
Output lumen:	80-100LM/W
CRI:	75<Ra<85
Adjustable angle:	0~270°
LED source:	CREE
IP Rating:	IP65
Operate working temperature:	-25~+60 °C
Stock temperature:	-30~+65 °C
Lifespan:	50,000 H
Product size:	D141*H96mm
Factor:	≥0.85
Power efficiency:	≥90%
Electric Shock Classification:	II Class
Controll way:	Single colorf /DMX512



Installation Illustration



ISO 9001:2000



Company address: No.91 ,Nantou Ave. Dong, Nantou town,Zhongshan City, China 528427

Company address: Show room address : No. S-11,Y23 building ,England cluster,International city,50819 Dubai
UAE